

## Content-Enable Any Application

ILINX® Integrate allows users to retrieve and display images from within virtually any application regardless of source—host based, Windows, Web or Citrix—saving time and increasing efficiencies.

Requiring no development, ILINX can integrate whatever is running on your client desktop into a cohesive system that allows data to pass easily between two or more applications.

## Benefits & Features

### Accelerate Critical Business Transactions

- › Access and distribute data with ease
- › Single point of access
- › Common interface between an integrated set of documents, databases and legacy application
- › Improve efficiency by replacing routine procedures—data entry, searching and saving
- › Requires no programming
- › Eliminates re-keying information or toggling between application
- › Automates data extraction, conversion and population on any desktop application

### Easily Operate

- › Easily retrieve and transfer information between applications
- › Ability to access and simultaneously view multiple data types
- › Point-and-click set-up gets users up and going in no time
- › User can simply transfer information using:
  - › Floating tool bar
  - › Hot key
  - › Macro
  - › Change of data
- › Easy to install, develop, deploy and upgrade
  - › Flexible & extensible configuration in mapping studio
  - › Configure host application screens/fields with simple point & click interface
  - › No customization or API layer required for host
  - › Support for scripting

### Push & Pull Between Applications

- › Can handle data from any origin
- › Integrates any source, any target
  - › Application to application
  - › Database to application
  - › Host system to application
  - › Line-of-business application running on web or Windows

### Purchasing & Student Admissions

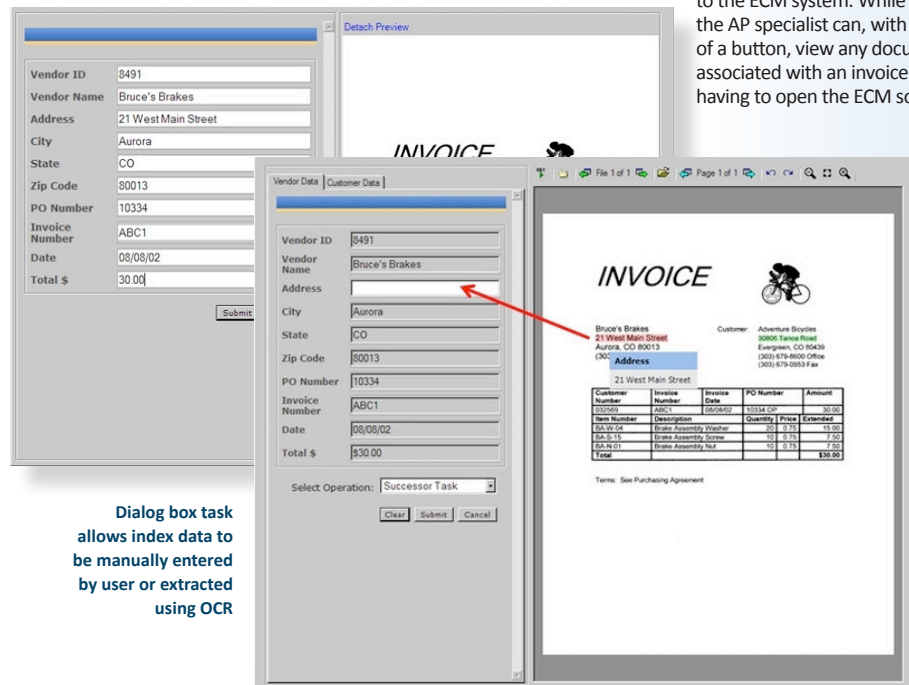
A large California university is using ILINX Integrate to image-enable the Student Information System (SIS) for both student admissions and purchase requisition processing.

Providing a codeless integration between the SIS and the content repository, ILINX Integrate enables image retrieval through a toolbar on designated SIS screens. Running in the background, it displays all documents associated with a requisition right in the SIS, with a simple click.

Similarly, Admissions staff, with no additional training, view electronic student admissions documentation stored in the ECM system by simply clicking a button on the SIS screens, never leaving that application.

### Accounts Payable Integration

A national food manufacturer uses ILINX Integrate to streamline the processing of thousands of invoices monthly, by content enabling the ERP system with data residing on documents in the ECM repository. Upon approval, invoices are routed via workflow to an Accounts Payable specialist who sends critical data to the ERP and contributes the document to the ECM system. While in the ERP, the AP specialist can, with the push of a button, view any documentation associated with an invoice without having to open the ECM software.



Dialog box task allows index data to be manually entered by user or extracted using OCR

**Integrates any source:**

- › Application to application
- › Database to application
- › Host system to application

**Trigger transfer using:**

- › Floating tool bar
- › Hot key
- › Macro
- › Change of data

**Accessibility:**

- › Single point of access
- › Access data with ease
- › Handle data from any origin
- › Pull between application
- › Retrieve information between applications

**Configuration:**

- › Mapping studio makes configuration flexible & extensible
- › Point and click interface
- › Does not require customization or API layer for legacy
- › Support for scripting
- › No programming required

**Business Transactions:**

- › Distribute data with ease
- › Transfer information between application
- › Automates data extraction
- › Automates conversion and population on any desktop application

**Legacy Application:**

- › Integrate with legacy systems
- › Common interface
- › Improve efficiency by replacing routine procedures
- › Eliminates re-keying information
- › Eliminates toggling between application

**Compatible ECM Systems:**

- › Oracle WebCenter Content
- › IBM FileNet P8
- › Kofax Capture
- › Cardiff Software
- › Microsoft SharePoint Server 2007

**Operating Specifications:**

- › Studio & Client are 32-bit Windows applications and incorporation support for centralized distribution including Windows Installer and SMS, XP and higher

